


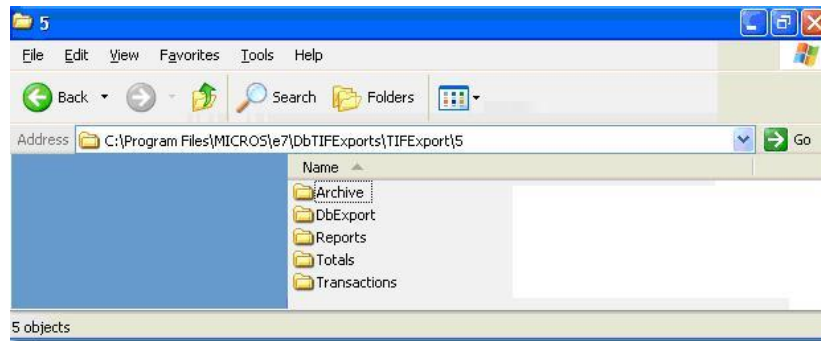


1. Log into your micros e7 system and enter the configurator screen.
2. Select Interfaces from the drop-down menu at the top left of the screen.
3. Click the Green “Add Record” button  to create a new interface.
 - 3a. Note the Number assigned to the newly created interface
 - 3b. Name the Interface “GETLinked Export”
 - 3c. Select “Export” from the Interface Code drop-down
 - 3d. Select “PC”  from the Node drop-down. (Your PC may be named differently but should have the same icon as the image below).
 - 3e. Click the Save Icon  to save your changes.



The next time you run end of day your e7 system will create a new folders “DbTIFExports\TIFExport\#” under your main e7 folder where # is the number that was assigned when you added the new interface above.

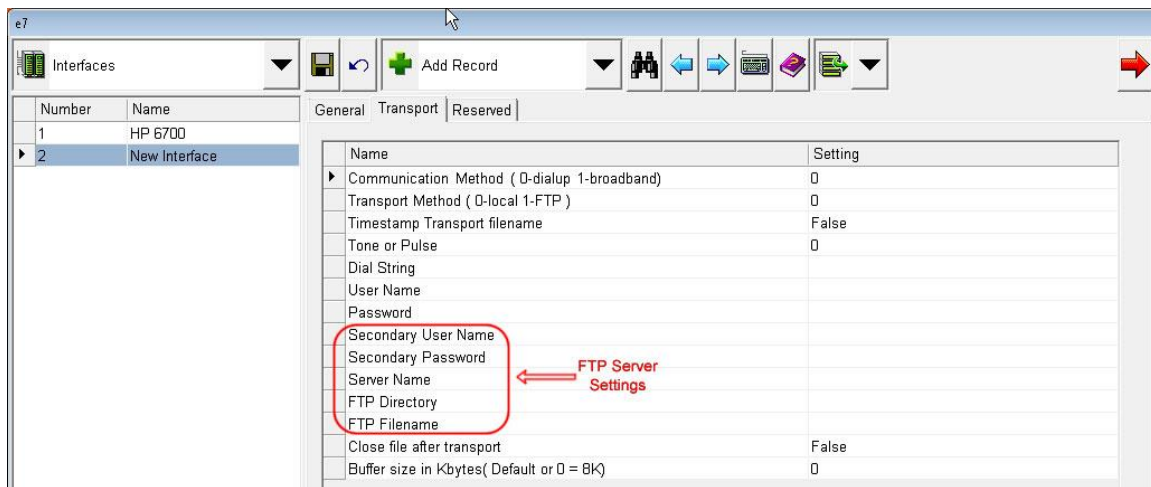


You can use the “Micros e7 Report (TIFF) Data Archive Utility” provided on our support site to archive the daily TIFExport data to a set of date stamped folders.

You can optionally have the micros e7 export interface send the data to a remote FTP server each night. This is especially useful for standalone e7 terminals that don't have a hard drive attached.

The FTP settings are on the "Transport" tab of the e7 export interface setup screen. The following options need to be set correctly:

- Communication Method – 0 for dialup modem, 1 for broadband internet
- Transport Method – Set to 1 for FTP
- Timestamp Transport Filename – Set to TRUE so that new data won't overwrite previous exports
- If using a dialup modem you will need to set Tone/Pulse, Dial String, User Name and Password.
- The Secondary User Name / password are for your FTP server.
- Server Name is the hostname or IP address of your FTP server
- FTP directory is optional. If specified the exported file will be put in a subfolder on the FTP site. The subfolder needs to be created manually. The e7 export will not create it.
- FTP Filename is usually left blank. E7 will provide a default filename.



The screenshot shows the 'e7' application window with the 'Transport' tab selected. The 'FTP Server Settings' section is highlighted with a red box and a red arrow. The settings are as follows:

Name	Setting
Communication Method (0-dialup 1-broadband)	0
Transport Method (0-local 1-FTP)	0
Timestamp Transport filename	False
Tone or Pulse	0
Dial String	
User Name	
Password	
Secondary User Name	
Secondary Password	
Server Name	
FTP Directory	
FTP Filename	
Close file after transport	False
Buffer size in Kbytes(Default or 0 = 8K)	0